

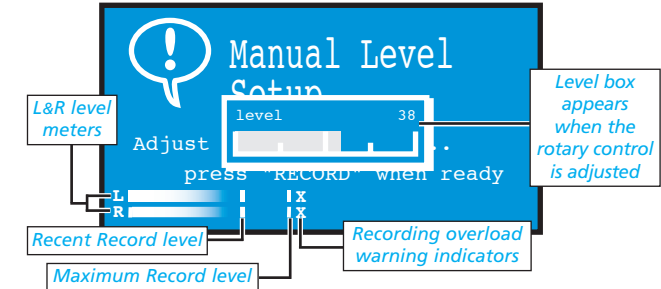
RECORD OPTIONS

Record level mode

Automatic record level: Sound is monitored and record level adjusted automatically for a reasonable result. (Default setting.)

Manual record level: User sets record level for optimum result.

1. Select "Manual record level" from the menu.
2. Connect external mic(s) if required. Press RECORD.



3. The record levels can be adjusted using the rotary control. Note: speakers are switched off while a mic recording is in progress, but on when line inputs are being used. The volume level adjusts with the record level.

4. Once set, press RECORD again and recording begins.

Note: Levels can be adjusted during recording by selecting the LEVEL menu soft key and using the rotary controller.

Microphone Settings

Two microphone setup

2 mics are dual mono: Recording will be in mono regardless of whether one or two mics are being used.

2 mics are a stereo pair: One mic records to the left channel, the other records to the right channel. (Default setting.)

Microphone Sensitivity

High sensitivity: Ideal for most conditions including quiet recordings. (Default setting.)

Low sensitivity: Select if recordings are overloaded or distorted.

Turn phantom power on

Some microphones require an external 48V power source known as "phantom power". This can be supplied via the XLR microphone sockets. The default setting is OFF.

Once selected, phantom power remains on until deselected or the unit is switched off.

Record from digital input

Allows recording via the coaxial or optical digital connectors. Option not visible in record mode.

Fade out recording

Recording ends with 5 second fade out when STOP is pressed. Option only visible during recording.

Coomber Electronic Equipment Ltd.

Brindley Road, Warndon, Worcester, WR4 9FB, U.K.

Tel: 0044 (0)1905 342070

e-mail: sales@coomber.co.uk

Fax: 0044 (0)1905 759170

web: www.coomber.co.uk

All Coomber equipment is covered by a 12 months warranty against defective components or faulty manufacture from date of dispatch.

Any modifications to or misuse of the equipment renders this warranty void.

Security marked or damaged equipment cannot be exchanged under any circumstances.

Coomber reserve the right to change products and specifications without notice.

MPEG Layer-3 audio decoding technology licenced from Fraunhofer IIS and Thompson.

GH INSTR 3600 v1.0 29/06/2009

© Coomber Electronic Equipment Ltd. 2009

v1.0 first published 2009

ERASE OPTIONS

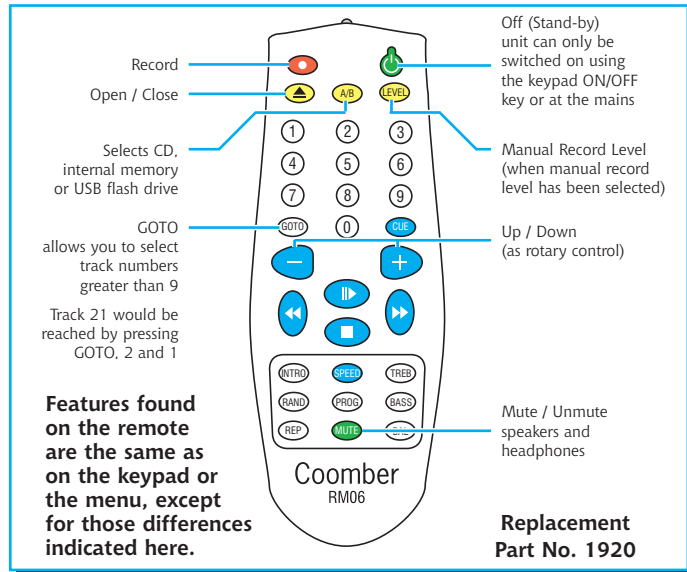
Erase disc / Erase internal drive

Erases the entire contents of a CD-RW or internal drive (as selected). All information will be lost. Option visible when a CD-RW is inserted or internal memory is installed.

Erase last track

Erases last track only on CD-RW or internal memory (as selected). Option visible when a CD-RW is inserted or internal memory is installed.

REMOTE CONTROL



SAFETY AND GENERAL INFORMATION



Class 1 laser product: Warning - This equipment is fitted with a LASER diode which can harm the eyes. Do not attempt to disassemble the casing or use any part of the contents for any purpose other than its intended use. This equipment is a CLASS 1 Laser Product - which means that it presents no danger if used as intended (i.e. to play or record CDs).

Headphones: For personal safety and listener comfort turn volume down and connect headphones into the equipment before placing them over ears. For safety use only 600 ohm headphones (i.e. Coomber type 1929).

Environments: The equipment should not be exposed to dust, moisture, water, chlorine and other corrosive substances in normal use or during storage. It will cause damage to this equipment.

Swimming pool atmospheres: are very hostile to all electro-mechanical equipment (e.g. steel rusts and rubber perishes). Equipment returned for repairs showing evidence of use in adverse environments may, at our discretion, be charged for (even during the 12 month warranty period).

- Do not cover the ventilation openings with any items (e.g. newspaper, fabrics etc.)
- Naked flames, such as lighted candles, should not be placed on or near the apparatus.
- The apparatus should not be exposed to dripping or splashing. No objects filled with liquids, such as vases, should be placed on or near the apparatus.

European Safety Standard: All Coomber equipment complies with EN60065. Any local requirements for use of this equipment should be taken into account.

Copyright and recordings: Recordings protected by copyright having copying restrictions placed upon them. If in doubt about your right to copy such material, contact the copyright holder for permission.

Class 1 construction: This equipment must be EARTHED. Mains Voltage UK & EEC: nominal 230V 50Hz USA: 110-120V 60Hz

UK & EEC Mains Cord: Line=Brown, Neutral=Blue, Earth=Yellow & Green. Fitted with either 13A UK or Semko moulded plug.

USA Mains Cord: Line=Black, Neutral=White, Earth=Green. Fitted with moulded USA plug.

Isolate from mains supply when not in use by removing the plug from the wall socket.

Mains Plug: The mains cable fitted to this equipment is already provided with a moulded plug. If another plug type is required, follow instructions from the plug manufacturer, or seek advice from a qualified person. DISPOSE OF ORIGINAL PLUG SAFELY, REMOVING ANY FUSES, where fitted. DO NOT RE-USE.

Mains Plug fuse rating: 3Amp to BS1362 (applicable in UK)

Connecting to the mains supply: The unit must be connected to a socket outlet with a protective earthing connection. The mains plug must be accessible at all times.

Model type and rating information is located on a label on the base of the product.

Additional Technical Information: If you require any further help or information, or if any point is not clear, then please telephone 01905 342070 quoting your model number and serial number (located on a label on the base of the product). Our Technical Department will be pleased to help you.

Note: This equipment contains no user serviceable parts and should only be disassembled and reassembled by competent qualified personnel. Dismantling will render the warranty void.

Electrical Safety Testing:

- Safety testing and servicing should only be carried out by competent qualified personnel.
- When undertaking an earth bond safety test, only use the externally exposed metalwork. Do not test against internal metal components found inside tape mechanisms or CD trays - THIS WILL LEAD TO IRREPARABLE INTERNAL DAMAGE.

The supply cable is part of a special assembly. If damaged the equipment should be returned to Coomber Electronic Equipment Limited or their agent for cable replacement.



Operating Instructions: "Classmaster Pro & Pro2"

All 'ClassMaster Pro' Recorder models

MAIN FEATURES

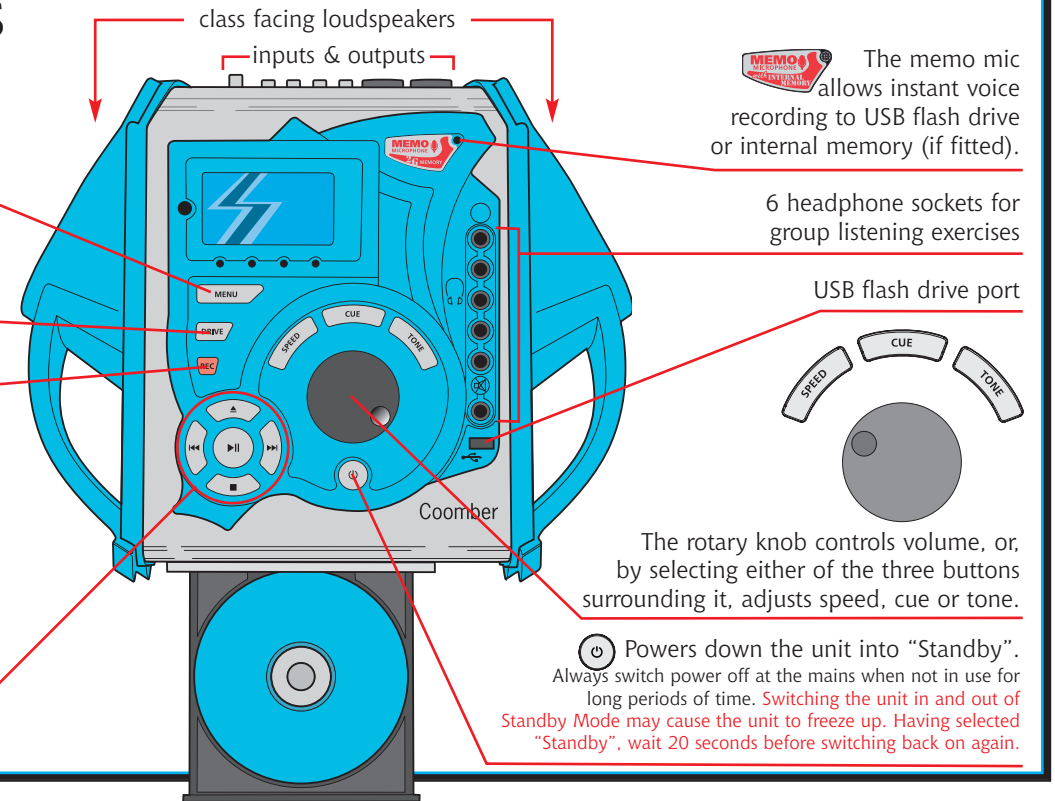
MENU gives access to a range of advanced features.

DRIVE allows you to select from a choice of CD, internal memory (if fitted) and USB flash drive.

REC press to record to the selected drive.

select as required to play/pause, stop, skip forward or backward from whatever source has been selected.

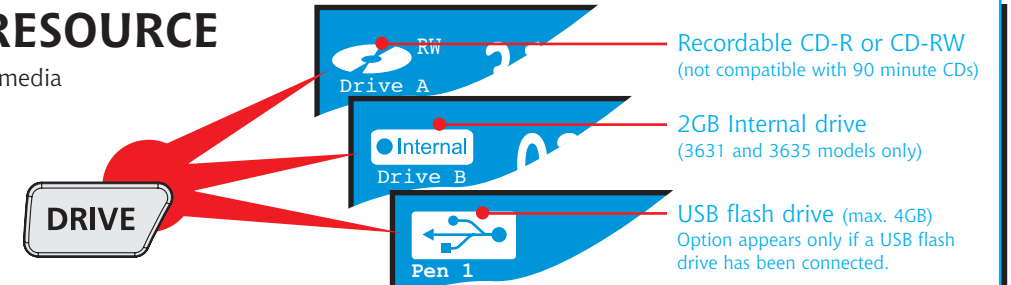
Press eject to open the CD tray.



SELECT A MEDIA RESOURCE

Press the **DRIVE** button to choose what media you wish to use for playing or recording.

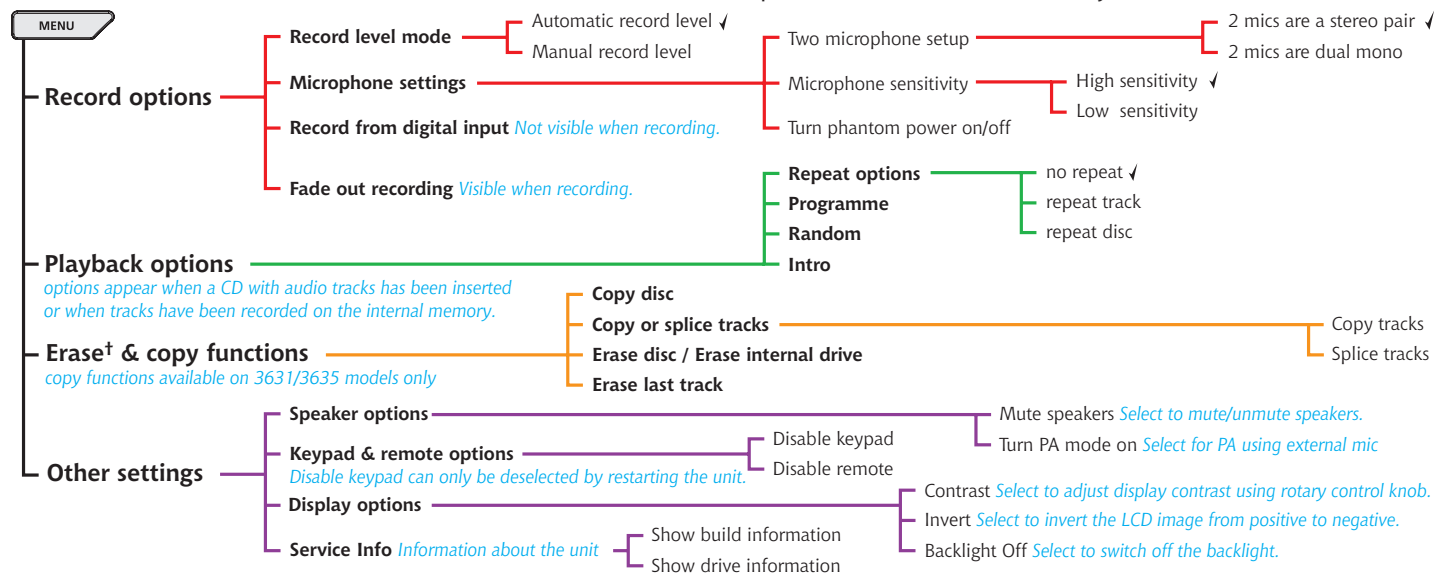
Your choice appears as an icon in the top left corner of the screen.



USB memory sticks (properly known as USB flash drives) vary in quality. Many cheaper varieties are not suitable for recording and may fail to record correctly. It is worth making a "sample" recording of some length before making important recordings!

THE MENU TREE

for advanced users - features and options available via the menu key



† Option appears when a CD-RW is inserted. ✓ Tick indicates default selection at startup. All options can be cancelled via the menu and default settings are resumed on startup.

PLAYING

1 CLASS / GROUP LISTENING

The **class-facing speakers**, allow easy operation from a desk while the class is listening without distraction.

6 **headphone sockets** are fitted for group listening.

Connecting headphones into the socket marked with a speaker and cross disconnects the loudspeakers.

2 PLAYING

You can play audio/MP3 from:-
CDs* and **USB flash drive** (up to 4GB)

You can play audio from:-
internal memory (3631 & 3635 models)

* conventional **audio CD, CD-R and CD-RW**

3 PLAYING MP3 FILES

Play, select tracks, stop and eject **MP3 CDs** like an ordinary CD.

Play MP3 or audio from a **USB flash drive** by locating and selecting the file to be played.

Insert the flash drive into the USB slot. Press **DRIVE** repeatedly until the display shows "Pen 1" and the USB logo.

Select **files** to show the contents of the drive.

Use the soft keys below the screen to navigate through the folders and individual tracks.

Press **folder** to display the contents of the highlighted item.

Press **play** to listen to your selection.

Audio/MP3 files and folders play in order of placement on a flash drive. A selected track (file) will play, followed by the next in the list. When all files have been played the next folder is opened and played.

4 THE CONTROL KNOB

The large knob controls speaker volume. It also controls speed, cue and tone (bass, treble and balance).

Press the appropriate button so that its function appears in the screen. Its setting can be adjusted with the rotary knob.

After a few seconds of inactivity (speed or tone), function of the control knob returns to volume.

While the tone function will be obvious to many users, the **speed** and **cue** controls require some explanation. Better still, play a CD, press "**speed**" and turn the knob - the function will quickly become obvious.

Similarly, playing a CD and selecting "**cue**", then twisting the knob, will quickly show the value of this unique function. It is ideally suited to language learning and literacy.

Cue function remains active until cancelled by pressing the "**cue**" button again. "Cue" also works in pause mode.

MP3 playback can utilise the **cue**, but not **speed** control.

5 PLAYBACK OPTIONS

Repeat options
No repeat: play a CD/internal memory once only (default).
Repeat track: select and continually play one track.
Repeat disc: play entire CD/internal memory continuously.

Programme
 Choose the order of tracks playing from CD/internal memory.

On selection the programme screen appears. Use the "tens" or "units" keys to select the number of your first track.

Note: All options can be cancelled via the menu. Default settings are resumed on startup.

Press NEXT to add the next track and so on. When ready, press DONE. Press PLAY to hear the selected programme.

Random mode
 Plays all tracks on CD/internal memory in a random fashion.

Intro mode
 Plays five seconds of each CD / internal memory track.

RECORDING

1 RECORDING

You can record audio to **USB flash drive** and **internal memory** using the **memo microphone**.

Using an external microphone, you can record direct to **CD, USB flash drive** and **memory**.

You can also record to CD, USB flash drive or internal memory using line or digital inputs (i.e. direct from a PA system)

Memo Mic
 MEMO MICROPHONE WITH INTERNAL MEMORY

External Microphones
 combination 6.35mm jack/XLR sockets. **48v Phantom Power** can be enabled via menu.

Line In
 record from line-out of PA, mixer, Hi-Fi etc.

Line Out
 audio output to line-in of PA or amplified speakers.

Digital In
 (coaxial & optical) connects to digital output from Hi-Fi etc.

Digital Out
 coaxial & optical connects to digital input of other recording and playback devices

2 MEMO MIC RECORDINGS

You can record to the **USB flash drive** or **internal memory** direct from the **memo microphone**.

You can record up to 99 tracks

You can also record to USB flash drive / internal memory using external microphones, simply by connecting them into mic sockets located on the rear of the equipment.

1. Select the drive required with the **DRIVE** key.
2. Press the **REC** key to begin recording.
3. Press the **stop** key to stop recording.
4. Press **play** to hear the recording.

3 EXTERNAL MIC RECORDINGS

You can record to **CD-R & RW, USB flash drive** or **internal memory** using **external microphones**.

You can record up to 99 tracks

Fixing: You can eject the CD without "fixing" it - you can then re-insert it and add more tracks at a later date. If you "fix" the disc, you cannot add further tracks, but the CD can be played on most ordinary CD players.

1. Connect the microphone(s) and select the drive required with the **DRIVE** key.
2. Press the **REC** key to begin recording.
3. Press the **stop** key to stop recording.
4. Press **play** to hear the recording.

IMPORTANT WARNING:
 NEVER REMOVE A USB FLASH DRIVE WHILE RECORDING OR ERASING. IT WILL CAUSE LOSS OF INFORMATION AND MAY DAMAGE THE DRIVE!
 ALSO: ENSURE THAT THE FLASH DRIVE IS NOT "WRITE PROTECTED" WHEN RECORDING!

4 LINE & DIGITAL RECORDINGS

You can record to **CD-R & RW, USB flash drive** or **internal memory** using **digital or line inputs**.

You can record from a mixer desk, PA or Hi-Fi system via stereo line or digital inputs.

Note: To record from a digital source, you must first select **Record options > Record from digital input** from the menu.

1. Connect line out (source) to line in (Coomber) and select drive required with the **DRIVE** key.
 If USB or internal memory is selected as the recording source, also select **input** and **line** using the soft keys (or digital input as previously described).
2. Press the **REC** key to begin recording.
3. Press the **stop** key to stop recording.
4. Press **play** to hear the recording.

Important Note Always use good quality media for recording purposes (such as TDK, Sony or Verbatim). Cheap media have a high failure rate and may lead to users losing (or failing to successfully complete) valuable recordings.

This equipment was developed and tested using high quality media. We do not accept any liability for recording failure caused by the use of poor quality, scratched or dirty CDs or low quality USB flash drives.

RECORDING TIP
 While making any recording, you can start a new track at any point without stopping. Simply press the **REC** or **play** keys to instantly begin a new track without losing any information.